



Easthope Associates

Cochrane's
 6 Lower Street
 Turpinlow
 Royston
 Herts. SG8 7RJ
 Tel: 01763 208434
 Fax: 01763 208199
 e-mail: david@easthope.co.uk

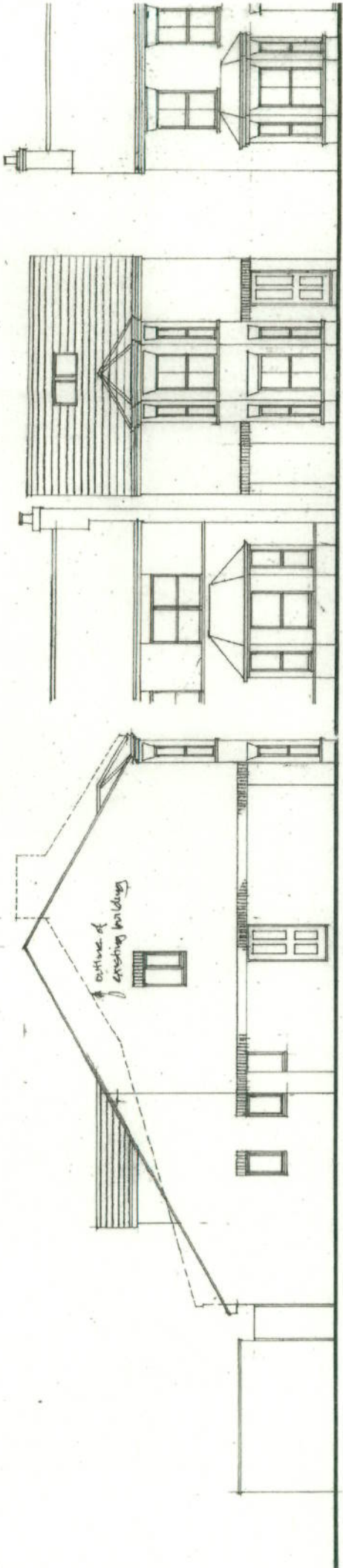
location plan 1:1250

1019:05
 A3 24.8.11.



block plan 1:500

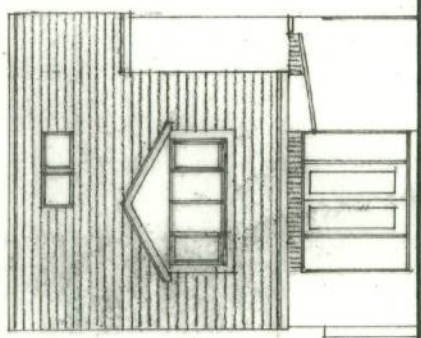
2 Montreal Road Cambridge



north elevation

west elevation

roofs - slate
 walls - buff brick
 joinery - white upvc



east elevation

south elevation

proposed glass
 to side windows
 of dormer

REVISIONS
 A. new roof line proposed 14.3.11
 B. buff boundary revised
 note on new windows re
 obscure glass added 8.9.12

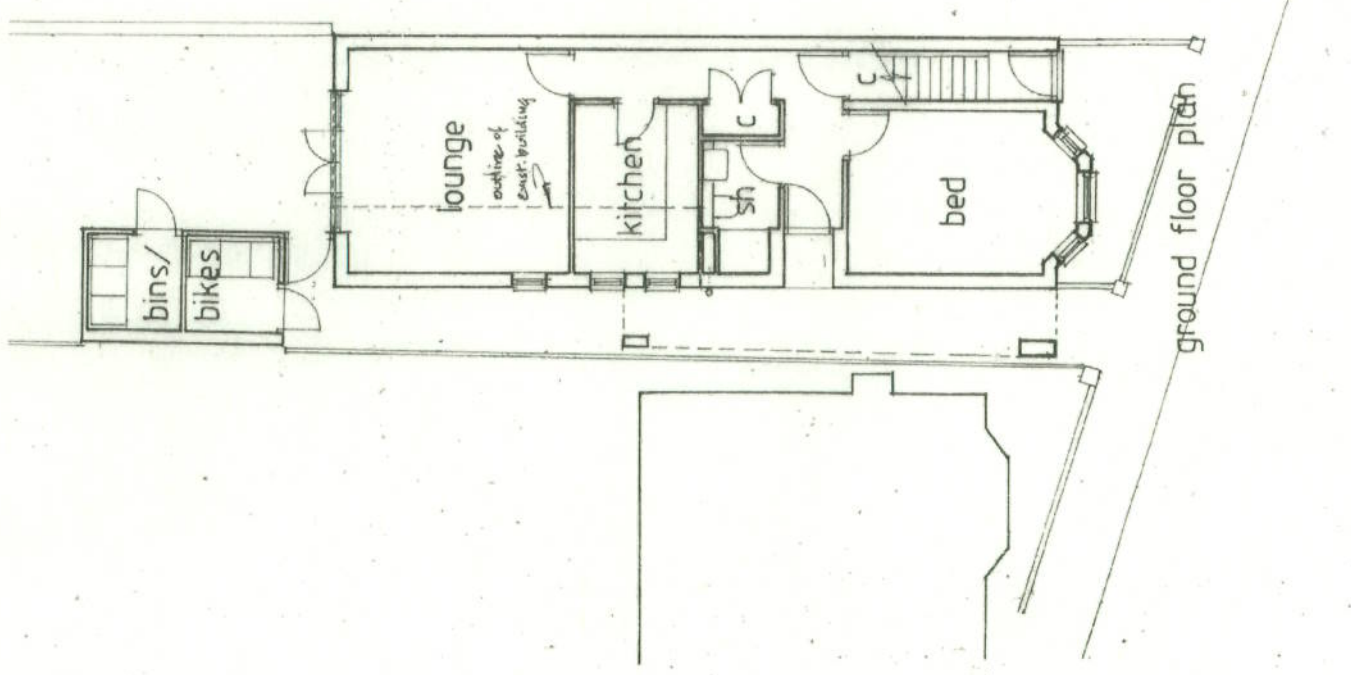
Easthope
 Associates

Coolham
 6 Lower Street
 Thripplow
 Royston
 Herts SG8 7RJ
 Tel: 01763 208434
 Fax: 01763 208199
 e-mail: david@easthope@btinternet.net

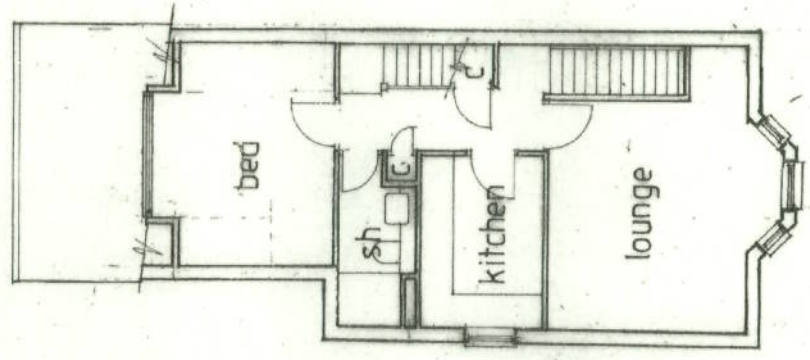
2 Montreal Road Cambridge

1019:04b
 1:100 at A3

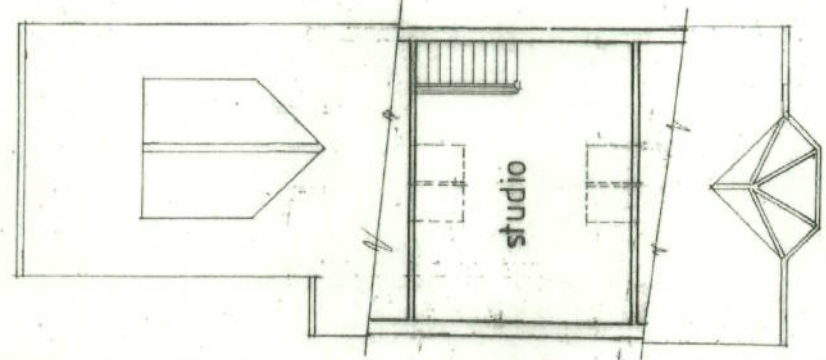
REVISIONS
 A. new roof line located 14.3.12.
 B. bay window redesign
 20.12.



ground floor plan



first floor plan



roof plan

Easthope
 Associates

Coburnes
 6 Lower Street
 Thraplow
 Royston
 Herts. SG8 7RJ
 Tel: 01763 208434
 Fax: 01763 208199
 e-mail: david@easthope@btinternet.com

2 Montreal Road Cambridge 1019 :03 B
 1:100 at A3 24.5.11.